

CLiCK

THE PHOTOGRAPHIC SOCIETY OF INDIA
RS. 10/- JUNE 2011



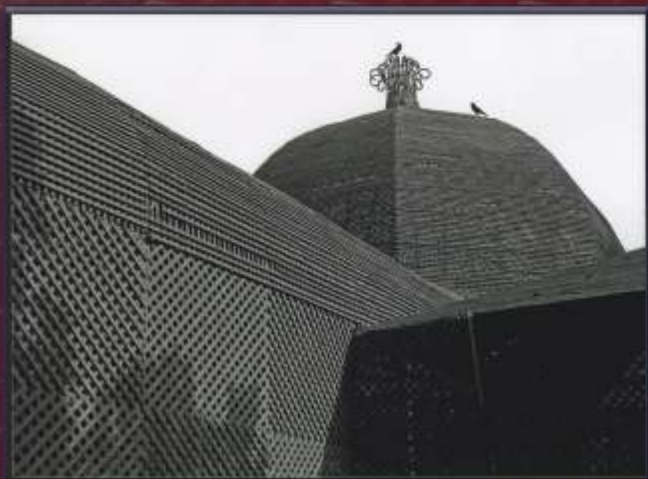
Vilas Parab 1st in B/W



Dattatrāya Padekar 1st in Col.



Arjun Kamble 1st in Col. Beginners



Dattatrāya Padekar 1st in Outing



Umakant Madan 2nd



Arjun Kamble 3rd



Dattatraya Padekar Acpt



Umakant Madan Acpt



Dattatraya Padekar Acpt



Arjun Kamble Acpt

OUTING AT JIJAMATA UDYAN ON 27TH APRIL, 2011

Judge: Shri Prasad Pawaskar

Managing Committee

Mr. Kersi Rabadi

President

Mr. R. B. Pednekar, FFIP

Vice President

Mr. Prasad Pawaskar

Jt. Hon. Secretary,

Hon. Editor, Outing

Mr. Samir Mohite, APSI, FFIP, AFIAP

Jt. Hon. Secretary

Smt. Kalpana Shah, APSI

Hon. Treasurer

Mr. Nagesh Sakpal, APSI

Salon Participation

Mr. Milind More

Library

Mr. P. G. Shivalkar, Hon PSI

Mon. Competition, Gallery

Mr. Santosh Sawant

Outing Incharge

Mr. Vilas Gholve

Studio Incharge

Mr. Dilip Patil

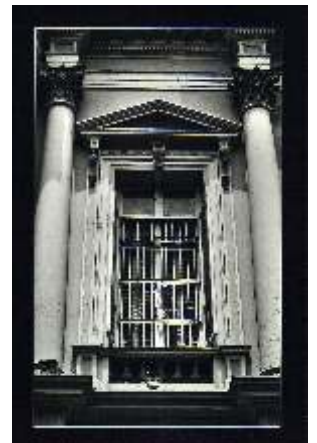
Library, Environment & Maint.



P. G. Shivalkar, Hon PSI Acpt



P. G. Shivalkar, Hon PSI Acpt



Umakant Madan Acpt

MEMBERS' MONTHLY COMPETITION MAY 2011



Dattatraya Padekar 2nd in BW



Prasad Mantri 2nd in Col

MEMBERS' MONTHLY COMPETITION MAY 2011



Vaibhav Jaguste 3rd in BW



P. G. Shivalkar, Hon PSI Acpt



Dattatraya Padekar Acpt



Prasad Mantri Acpt



Vilas Parab Acpt

Sanket Harchekar Acpt Ganesh Ambokar Acpt

Judge: Shri Prasad Pawaskar



Umakant Madan Acpt

Vaibhav Jaguste Acpt P. G. Shivalkar, Hon PSI 3rd in Col Abhay Salagre Acpt Dr. Suwarna Gawde Acpt

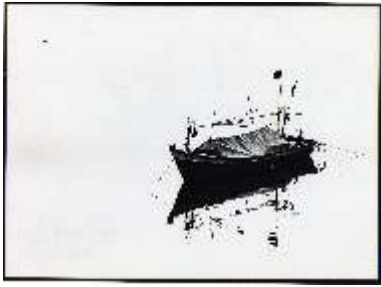


Dattatraya Padekar Acpt

Prasad Mantri Acpt

Nagesh Sakpal, APSI Acpt

Tilak Haria Acpt



Aditya Waikul 2nd in BW



Jiten Hadkar 3rd in BW



Jiten Hadkar Acpt



Preeti More Acpt



Preeti More Acpt



Arjun Kamble 3rd in Col



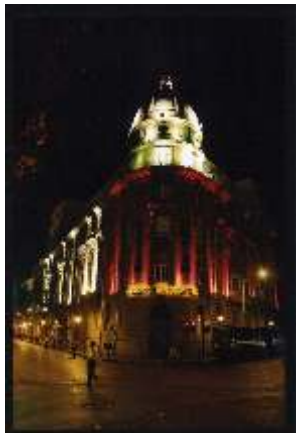
Arjun Kamble Acpt



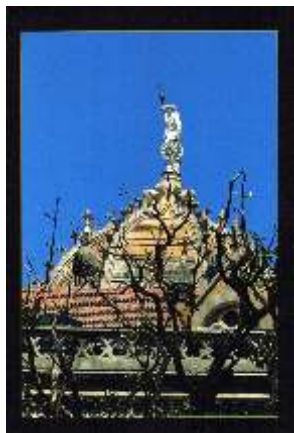
Preeti More Acpt



Aditya Waikul Acpt



Preeti More Acpt



Preeti More 2nd in Col



Dr. Arun Nayak Acpt



Prakash Redekar Acpt

Judge: Shri Prasad Pawaskar

Our Member Shri Soumitra Banerjee has offered to convert our membership cards into an elegant plastic (thick) cards at a special rate. Those members who are interested may contact the PSI office for details.

PROGRAMMES - JUNE 2011

03rd Friday - Monthly Competition, Colour Prints, Monochrome Prints & Outing for Mem.&Beginners.

10th Friday - Tribute to Legendary Photographer and a great devotee for pictorial photography
Shri Benu Sen, MFIAP, FRPS, ESFIAP, FNPAS, HON. EFIAP. (Slide show)

17th Friday - Introduction of election candidates.

24th Friday - Annual General Meeting. Meeting will start on sharp 6.30 pm.

Outing - 19th June, Banganga, Assemble at 7.00 am.

Results of photography competition of Kashmir outing

PSI Kashmir Outing, held on 8 April, 2011 to 17th April, 2011.



1st Prize- Rs. 1000/- won by
Shri Sanket Rathod



2nd Prize - Rs. 700/- won by
Shri Sachin Pagare



3rd Prize -Rs. 500/- won
by Shri Ravindra Kashalikar



Certificate of Merit - Rs. 300/-
won by Shri Prasad Pawaskar



Certificate of Merit - Rs. 300/-
won by Shri Chetan Dhatavkar



Certificate of Merit - Rs. 300/-
won by Shri Prasad Mantri

Judge: Shri Kersi Rabadi

THE PHOTOGRAPHIC SOCIETY OF INDIA an oldest Institute

WEBSITE :- www.photographicsocietyofindia.org EMAIL:- psi1937@yahoo.com

Professional Advance Photography Course

A new course of Professional Photography.
Portrait Photography, Glamour Photography,
Product Photography -Jewelry and much more
more Studio sessions.

Learn Under Experienced and Professional Photographers

**195, Saheb Building,
Dr. D. N. Road, Fort,
Mumbai - 400 001
Tel - 22664296**







PSI Mandu outing

Madhyapradesh

19th Sep. to 26th Sep 2011

Tour cost 7600 only.

Jahaj Mahal, Jami Masjid, Baj Bahadurs Palace,
Roopmatis Pavilion, Maheshwar and Omkareshwar.



3AC. Railway journey, 2/3 share rooms,
1 lunch, 4 Breakfast and 4 Dinner, 35 seater bus.

Book before 17th June for confirm railway reservation.

Prasad Mantri - 9969472411

Important - ELECTION -

Election of the Managing Committee Members for the year 2011-2013 shall be held on 24th June 2011 between 10.00 am and 6.00 pm. Members shall bring their valid PSI ID card for voting. Without valid ID card, members will be refrained from voting.
Election Officer: Shri Cyrus Shroff, Hon PSI, AIIPC.



Opening Ceremony of an exhibition of Mega Outing Kashmir held on 20th May, 2011 at PSI Art Gallery. This exhibition inaugurated by PSI senior members.

THE PHOTOGRAPHIC SOCIETY OF INDIA an oldest Institute

WEBSITE :- www.photographicsocietyofindia.org

EMAIL:- psi1937@yahoo.com

PHOTOGRAPHY COURSES, LEARN UNDER EXPERIENCED PHOTOGRAPHERS
DIGITAL AND PHOTO EDITING, ENJOY MEMBERSHIP FACILITIES



195, Saheb Building,
Dr. D. N. Road, Fort,
Mumbai - 400 001
Tel - 22664296

Digital photography was used in astronomy long before its use by the general public and had almost completely displaced photographic plates by the early 1980s. Not only are CCDs more sensitive to light than plates, but they have a much more uniform and predictable response. The CCDs used in astronomy are similar to those used by the general public, but are generally monochrome and cooled with liquid nitrogen so as to reduce the noise caused by heat. Many astronomical instruments have arrays of many CCDs, sometimes totaling almost a billion pixels. Nowadays amateur astronomers also commonly use digital cameras, including the use of webcams for speckle imaging or "video astronomy".

[edit] Sensor size and angle of view

Cameras with digital sensors that are smaller than the typical 35mm film size will have a smaller field or angle of view when used with a lens of the same focal length. This is because angle of view is a function of both focal length and the sensor or film size used.



If a sensor smaller than the full-frame 35mm film format is used, such as the use of APS-C-sized digital sensors in DSLRs, then the field of view is cropped by the sensor to smaller than the 35mm full-frame format's field of view. This narrowing of the field of view is often described in terms of a *focal length multiplier* or crop factor, a factor by which a longer focal length lens would be needed to get the same field of view on a full-frame camera.

If the digital sensor has approximately the same resolution (effective pixels per unit area) as the 35mm film surface (24 x 36 mm), then the result is similar to taking the image from the film camera and cutting it down (cropping) to the size of the sensor. For an APS-C size sensor, this would be a reduction to approximately the center 50% of the image. The cheaper, non-SLR models of digital cameras typically use much smaller sensor sizes and the reduction would be greater.

If the digital sensor has a higher or lower density of pixels per unit area than the film equivalent, then the amount of information captured will differ correspondingly. While resolution can be estimated in pixels per unit area, the comparison is complex since most types of digital sensor record only a single colour at each pixel location, and different types of film will have different effective resolutions. There are various trade-offs involved, since larger sensors are more expensive to manufacture and require larger lenses, while sensors with higher numbers of pixels per unit area are likely to suffer higher noise levels.

For these reasons, it is possible to obtain cheap digital cameras with sensor sizes much smaller than 35mm film, but with high pixel counts, that can still produce high-resolution images. Such cameras are usually supplied with lenses that would be classed as extremely wide angle on a 35mm camera, and which can also be smaller size and less expensive, since there is a smaller sensor to illuminate. For example, a camera with a 1/1.8" sensor has a 5.0x field of view crop, and so a hypothetical 5-50mm zoom lens will produce images that look *similar* (again the differences mentioned above are important) to those produced by a 35mm film camera with a 25-250mm lens, while being much more compact than such a lens for a 35mm camera since the imaging circle is much smaller.

To be Cont.

RNI 14170/67



Sanket Rathod 1st in Kashmir outing exhibition

To, BOOK - POST

From :

THE PHOTOGRAPHIC SOCIETY OF INDIA

Saheb Building, 5th Floor, 195 D. N. Road, Fort, Mumbai - 400001

Phone : 22664296, Website : <www.photographicsocietyofindia.com>

EEmail direct to secretaries : psi1937@yahoo.com

Printed and Published by Mr. KERSI RABADI on behalf of

The Photographic Society of India, Mumbai.

Printed at Mayfair, 6 Hanuman Industrial Estate, 42 B. G. D. Ambekar Marg,

Wadala, Mumbai - 400 031